

KMOS  PBS.

MAY 2026

CONTACT

PROGRAM GUIDE

**LIFE ON EARTH:
ATTENBOROUGH'S
GREATEST ADVENTURE
MAY 6 AT 7 P.M.**



A SERVICE OF THE
UNIVERSITY OF
**CENTRAL
MISSOURI**

KMOS-TV
Wood Building, Room 11
University of Central Missouri
Warrensburg, MO 64093
800-753-3436

KMOS-TV Staff
 Josh Tomlinson, *Director*
 Audrey Alley, *Engineer*
 Scott Alvested, *Community Engagement Coord.*
 Andy Avery, *Chief Engineer*
 Alicia Brockhaus, *Member Service Coordinator*
 Ginnie Cook, *Membership Support Specialist*
 Christian Lampher, *On-Air Operations Coord.*
 Nellie de Laurier, *Program & Traffic Coord.*
 Chris DiMaso, *Manager of Community Support*
 Roy Millen, *Producer*
 Brandi Miller, *Promotion Coordinator*
 Tim Oar, *Producer*
 Tonia Werneke, *Financial Operations Coord.*

Student Staff
Financial Jayme Thompson
Membership Zach Spangler
Operations Trinity Alvested, Ankit Kuttarmare,
 Palash Pallit, Pooja Shrestha
Production Kayla Blankenship, Nikolay Forste,
 Cyrus Gilmore, Brad Hadank, Krede Kitchen,
 Trace Pennington, Rudy Potocnik, Madeline
 Otero, Joshua Smedley, Demi Talavera, Megan
 Weaver, Andrew Zoellner
Promotions Jadesola Akande, Emily Matter
Traffic Krish Manandhar, Roseme Sapkota

University of Central Missouri
Board of Governors
 Ken Weymuth, Sedalia, *President*
 Stephen Abney, Warrensburg, *Vice President*
 Mary Dandurand, Warrensburg, *Secretary*
 Hadley Oden, *Student Governor*
 John A. Collier, Weston
 Gus S. Wetzel, II, M.D., Clinton
 Phyllis A Chase, Ed.D., Columbia
 Stu Rogers, Kansas City
 Roger Best, *University President*

Community Advisory Board
Elected Members
 Rick Langdon, Sedalia, *Chairperson*
 Marshall Abney, Warrensburg, *Vice Chairperson*
 Tonia Werneke, *Secretary*
 Tammy Chute, Jefferson City
 Doug Harris, Warrensburg
 Jamila Khalil, Sedalia
 Meryl Lin McKean, Warrensburg
 William Smart, Ionia
 Rosalie Spencer, Rolla
 Cindy Squire, Centralia
 Douglas Sokolowski, Sedalia

Senior Active Members
 Galen Dody, Clinton
 Don Kiefer, Clinton

ON THE COVER



Sir David Attenborough turns 100 years old on May 8th. Every Wednesday at 6 p.m. we are celebrating the great naturalist and historian.

Life on Earth: Attenborough's Greatest Adventure offers behind-the-scenes insights into the making of Attenborough's groundbreaking series, "Life on Earth."

Watch the premiere of *Life on Earth: Attenborough's Greatest Adventure* May 6 at 7 p.m. on KMOS channel 6.1. Check page 30 for more Attenborough programs.

TABLE OF CONTENTS

- 2 ... On the Cover
- 3 ... Member News
- 4 ... Monthly Highlights
- 5 ... Benefits of KMOS Membership
- 6 & 7 ... Mysterious Summer on Emerge 6.3
- 8 ... Corporate Support & Channels
- 9 ... Weekday Schedule 6.1
- 10-11 ... Weekend Schedule 6.1
- 12-13 ... Daytime Create 6.2
- 14-15 ... Daytime Emerge 6.3
- 16-17 ... Weekend Emerge 6.3
- 18-29 ... Primetime Schedule
- 30 ... Attenborough All Month
- 30 ... Membership Update
- 31 ... KMOS PBS KIDS

Contact is published monthly for KMOS PBS members and viewers. We work to ensure accuracy at press time, but last minute changes are sometimes unavoidable. We welcome your comments, questions and suggestions.



Public media plays an important role in central Missouri and our country. We are committed to *trust, access, and service* in a fragmented media environment that increasingly prioritizes profit over people's interest.

One of our most important roles is to provide reliable news reporting. This means that we prioritize accuracy, depth, and context over speed and sensationalism. To our viewers in central Missouri, this means that we are committed to helping you understand not only what's happening, but why it's happening. This kind of reporting helps create informed citizens who are essential to strong communities.

Another critical role that we play is education-based children's programming. For decades, public media has provided free, research-based programming that helps support children's learning. This means that children are developing important skills like literacy, critical thinking, and emotional intelligence, regardless of income level. This can be especially important in our rural communities.

What sets us apart from other media organizations is our independence. This means that we are not beholden to corporate interests or advertisers. Our programming decisions are based on public need, not profit. This allows us to be diverse, to have local voices, and to create programming that accurately reflects our communities.

It's all made possible by member support. Your donation to our organization helps us maintain this kind of integrity, access, and service. Public media belongs to those who support it.

If you are like us and care about trusted news, education programming, and independent media, it's time to take action. Support us during our Public Media Giving Days on May 1st & 2nd or join us for our June Pledge.

MEMBER NEWS AND UPDATES



Chris DiMaso
 Manager of
 Community Support
dimaso@ucmo.edu

**PUBLIC MEDIA
 GIVING DAYS**

**MAY 1-2
 2026**

CHANNEL 6.1 - HIGHLIGHTS

Wowsabout on PBS KIDS Set in breathtaking Sequoia National Park, Wowsabout is a Children's TV special following Roxy, a free-spirited hedgehog and Ronald, a rule-following pig. Their worlds collide until the AWE of the natural world shows them that they have a lot in common and hysterical adventures ensue! *May 1 at 9:30 a.m., May 11 at 11 a.m., May 20 at 12:30 p.m.*

Horizons from PBS News Dive into the world of science, health, technology, and environmental issues making headlines each week, hosted by PBS News Hour's William Brangham, with in-depth discussions featuring leading experts and professionals. *Saturdays at 5 p.m.*

Compass Points from PBS News Join PBS News Hour's Nick Schifrin and a panel of experts each week analyzing prominent international affairs topics and America's role in a shifting world, breaking down global conflicts, rising tensions, and their implications for U.S. interests. *Sundays at 5 p.m.*

Natchez on Independent Lens In a Mississippi town, historic homes fuel a tourism economy rooted in antebellum nostalgia. Through tour guides, homeowners, and activists, Natchez captures how public history is performed and how unresolved racial tensions have shaped the town. *May 11 at 9 p.m.*

CHANNEL 6.2 CREATE SHOWCASE

Each week Create experts bring you seasonal programming in five-hour blocks beginning each Friday starting at 8 p.m., Saturday starting at 9 a.m. and Sunday at 11 a.m.

Fiesta with Pati May 1-3

Let's have a fiesta on La Frontera! Pati Jinich leads us through the fascinating and often misunderstood U.S.-Mexico border region to showcase the rich culture, people, and cuisines of these dynamic communities.

Happy Travels, Rick! May 8-10

It's Rick Steves' birthday, and he's taking us to some of his favorite places! Get ready for a tour of fabulous European destinations that are sure to inspire some travel dreams for your next adventure.

Creating in Community: Asian Pacific American Culture May 15-17

Celebrate AANHPI Month with stories that show how creativity comes to life through community and culture and experience food, fashion, and family from all corners of the globe.

National Barbecue Month (Viewer's Choice) May 22-24

The smoke, the sizzle, the rich flavor... there is so much to love about barbecue! Enjoy a feast of grilled perfection that spans many cuisines, selected by Detroit PBS viewer Tom D. from New Baltimore, Michigan as we mark National Barbecue Month.

Weekend Projects May 29-31

Join Create for a weekend of tips and tricks to crack your to-do list, ranging from home fixes and furniture repairs to projects that hone your handiwork skills.

CHANNEL 6.3 EMERGE

The Cleaner In this crime comedy it's the cops' job to clean up the city, but it's Wicky's job to clean up the crime scenes. When the detectives finish their work, Wicky moves in, armed with his bleach and scrubbing brushes. His job brings him into contact with the strangest people: those who knew the victims - and sometimes even the killers themselves. But because he's a chatty man, he tends to gossip more than he cleans. *Saturdays at 6 and 6:30 p.m.*

Clive Davis: The Soundtrack of Our Lives A guided tour of a cultural revolution that deeply impacted the music industry through the career of a man who consistently caught the next wave before everyone else-if he didn't just create the wave himself. From the '60s to the rise of hip-hop, Davis discovered, mentored, or oversaw an incredible range of performers during his career including: Janis Joplin, Bruce Springsteen, Simon & Garfunkel, Santana, Miles Davis, Billy Joel, Barry Manilow, Patti Smith, The Grateful Dead, Kenny G, Aretha Franklin, Whitney Houston, Sean Combs, Alicia Keys. Many of them are featured, in both archival footage and contemporary interviews, to attest to Davis' singular talent and blessed life, as well as the work that went into one to create the other. *May 3 at 7 and 10 p.m.*



Get your own PBS Nerd Merch when you contribute to KMOS PBS as a our thank you to you. In addition when you support KMOS with a donation of just \$96 annually—or \$8 per month as a sustaining member—you'll gain access to KMOS Passport, our premium streaming service, and receive our monthly program guide, Contact.

Don't miss out—become a member today and start enjoying the best of

KMOS PBS!



PBS NERD TSHIRT
\$96.00
(\$8.00 monthly)

PBS NERD SOCKS
\$96.00
(\$8.00 monthly)

PBS NERD MUG
\$96.00
(\$8.00 monthly)

Super Nerd combo
\$240.00
(\$20.00 monthly)

S M LG XL

S M LG XL

(Shirts only available in Adult Small -Extra Large)

Donation Type:

Amount: _____ One-Time Monthly Sustaining

Name: _____ Phone: _____

Address: _____ City: _____

State: _____ Zip: _____

Email: _____

(Required for KMOS Passport)

PAYMENT METHOD AND DETAILS:

My check is enclosed Credit Card EFT

Credit Card Number: _____

Exp. Date: _____ CSV: _____

EFT: Account No.: _____

Routing No.: _____

Account type: Savings or Checking

Or order online

[KMOS.org/nerd](https://www.kmos.org/nerd)



Don't forget to sign up for access to your very own Membership portal Today by visiting us at [KMOS.org](https://www.kmos.org)!

Return to KMOS-TV University of Central Missouri P.O. Box 800 Warrensburg, Mo. 64093

MYSTERIOUS SUMMER ON 6.3 EMERGE



Miss Scarlet and the Duke

Mondays at 8:00 & 9:00 p.m.
May 4 - August 25

Find Emerge 6.3 on your cable channel:
Cableamerica: 197
Charter: 185
Citizens: 29/170
Mediacom: 119
Suddenlink: 131



Ridley

Wednesdays at 9:00p.m.
May 4 - August 18



Sister Boniface Mysteries

Tuesdays at 8:00p.m.
May 18 - October 2



My Life is Murder

Tuesdays at 9:00 p.m.
May 4 - July 24



The Marlowe Mystery Club on Masterpiece

Tuesdays at 7:00 p.m.
May 4 - July 24



Agatha Christie Mysteries

May 1 at 7:00 & 8:30p.m.
May 8 at 7:00 p.m.



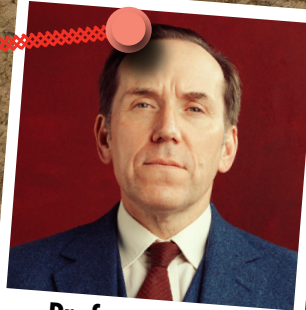
Sherlock

Fridays at 7:00 & 8:30p.m.
May 11 - 29



Captivated

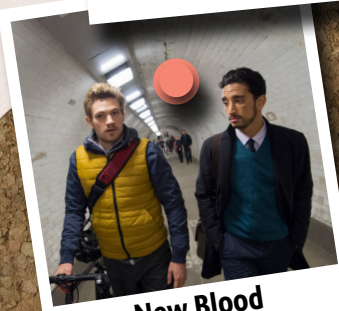
Thursdays at 7:00p.m.
May 4 - 29



Professor T (UK)

Wednesdays at 7:00p.m.
May 4 - July 31

Watch Emerge 6.3 on the **PBS App** or at pbs.org/livestream



New Blood

Wednesdays at 8:00p.m.
May 4 - July 17



Vienna Blood

Thursdays at 8:00p.m.
May 4 - August 18



Murder in the Mountains

Thursdays at 9:00p.m.
May 4 - August 29

ANTIQUES ROADSHOW

Murdock Banner Financial Group – Warrensburg
Reed & Sons Jewelers Sedalia

KMOS CREATE (Channel 6.2)

Reed & Sons Jewelers Sedalia
Satin Stitches Sewing & Embroidery – Columbia

PBS NEWSHOUR

Dody Legacy Group
Restoration Eyecare – Columbia
Robert Rollings Architects LLC – Sedalia

AMERICAN REVOLUTION

Show-Me America 250

BE MY NEIGHBOR DAY

Mexico-Audrain County Friends of the Library

KMOS COMMUNITY PARTNERS

Arrow Rock Lyceum Theatre – Arrow Rock

Missouri Humanities
We Always Swing Jazz Series

KMOS MEDIA PARTNERS

Townsquare Media
105.7 KIX FM, Awesome 92.3, KSIS 1050 AM – Sedalia, 91.3

KBIA FM – Columbia

KOPN 89.5 FM – Columbia

Cumulus Media

KJLU 88.9 FM – Jefferson City

Sedalia Democrat – Sedalia

WRITERS CONTEST

Central Bank of Warrensburg

MASTERPIECE

Liberty Center Association for the Arts – Sedalia

Sponsorships available
1-800-753-3436
kmos@kmos.org

SEWING AND QUILTING

Satin Stitches Sewing & Embroidery – Columbia

HOLOCAUST AWARENESS

Missouri Holocaust Awareness & Education Commission

Sponsor Spotlight



townsquaremedia.com

A community-focused digital and broadcast media and marketing solutions company.

KMOS Channels by Cable/Satellite Provider

	KMOS 6.1	Create 6.2	Emerge 6.3	PBS KIDS 6.4
Cableamerica	6/506	5	197	
Centurylink	6 / 1006	5		
Charter/Spectrum	9 / 707 / 709	184	185	190 / 200
Chariton Valley	2			
Citizens	6 / 205	28 / 169	29 / 170	
Fidelity	3	403		
Mediacom	6 / 706	118	119	117
Provincial	37 / 11			
Suddenlink	6 / 8 / 106	130 / 5	131	132
DirecTV	6			
DISH	6			

Find the KMOS 6.1 livestream at KMOS.ORG, PBS Mobile App, YouTube TV, and Hulu + Live and now on Amazon Prime!

	Mondays	Tuesdays	Wednesdays	Thursdays	Fridays
1PM	Baking with Julia				
1:30	Ask This Old House				
2PM	Austin City Limits 5/4 Pat Benatar & Neil Giraldo 5/11 Gary Clark JR / Black Pumas 5/18 Jelly Roll / The War and Treaty ----- 5/25 National Memorial Day Concert	Celebrity Antiques Road Trip 5/5 Peter White & John Sergeant 5/12 Pam Ayres & Geoffrey Whitehead 5/19 Brian Conley & Nick Owen 5/26 David Gower & Nick Hancock	5/6 Crossroads of a Nation: Missouri's Rifts, Roads, and Civil Rights ----- Lucy Worsley's Royal Myths 5/13 Elizabeth I: The Warrior Queen 5/20 Queen Anne: The Mother of Great Britain 5/27 Marie Antoinette: The Doomed Queen	Call The Midwife 5/7 Season 15, Episode 7 5/14 Season 15, Episode 8 ----- Funny Woman 5/21 Episode 1 5/28 Episode 2	5/1 Nature Woodpeckers: The Hole Story 5/8 Life on Earth: Attenborough's Greatest Adventures 5/15 Nature Attenborough and the Sea Dragon 5/22 Nature Attenborough's Wonder of Song 5/29 Nature Attenborough and the Jurassic Sea Monster
3PM	Recorded Live at Analog 5/4 Deborah Silver 5/11 The Black Crowes ----- 5/18 Live from the Artists Den: Reprise Patty Griffin 5/25 National Memorial Day Concert (cont'd)	First Lady 5/5 That White House 5/12 Voices Carry 5/19 Please Allow Me 5/26 Cracked Pot	Finding Your Roots 5/6 Moving on Up 5/13 Far from Home 5/20 Stranger Than Fiction 5/27 Dreamers One and All	Maryland on Masterpiece 5/7 Episode 1 5/14 Episode 2 5/21 Episode 3 ----- 5/28 Shaking It Up: The Life and Times of Liz Carpenter	NOVA 5/1 Return to the Moon 5/8 Decoding The Universe: Cosmos 5/15 Decoding The Universe: Quantum 5/22 When Whales Could Walk 5/29 Great Mammoth Mystery
4PM	Antiques Roadshow				
5PM	DW The Day				
5:30	BBC World News America				
6PM	PBS NewsHour				



Downton Abbey, Season 1

Sundays at 9 p.m.

Experience the universally acclaimed British historical drama, chronicling the lives of the aristocratic Crawley family and the staff who serve them in their Edwardian country house during the early 20th century. Watch on KMOS 6.1 Sundays at 9 p.m., or stream on demand with your Passport account.

	2 Saturday	3 Sunday	9 Saturday	10 Sunday	16 Saturday
5 AM	Mister Rogers' Neighborhood				
5:30	Arthur				
6 AM	Wild Kratts				
6:30	Weather Hunters				
7 AM	Lyla in the Loop				
7:30	Carl the Collector				
8 AM	Daniel Tiger	Market to Market	Daniel Tiger	Market to Market	Daniel Tiger
8:30	Curious Crew	Weathtrack	Curious Crew	Weathtrack	Curious Crew
9 AM	Into the Outdoors	Firing Line	Into the Outdoors	Firing Line	DIY Science Time
9:30	Homemade Live!	To The Contrary	Homemade Live!	To The Contrary	Homemade Live!
10 AM	Lidia's Kitchen	Washington Week	Lidia's Kitchen	Washington Week	Lidia's Kitchen
10:30	Milk Street	Missouri Politics	Milk Street	Missouri Politics	Milk Street
11 AM	Cook's Country	Live from the LBJ Library	Cook's Country	Live from the LBJ Library	Cook's Country
11:30	America's Test Kitchen	Sportspage	America's Test Kitchen	Sportspage	America's Test Kitchen
12 PM	This Old House	Lawrence Welk Show America at Play	This Old House	Lawrence Welk Show Caribbean Cruise	This Old House
12:30	This Old House		This Old House		This Old House
1 PM	Ask This Old House	Secrets of the Dead Ben Franklin's Bones	Ask This Old House	Secrets of the Dead Jamestown's Dark Winter	Ask This Old House
1:30	Market to Market		Market to Market		Market to Market
2 PM	Motorweek	Puzzle Lady Episode: 6	Motorweek	Puzzle Lady Episode: 1	Motorweek
2:30	Woodsmith Shop		Woodsmith Shop		Woodsmith Shop
3 PM	Love of Quilting	RFDs: Royal Flying Doctor Service	Love of Quilting	RFDs: Royal Flying Doctor Service	Love of Quilting
3:30	Quilt in a Day		Quilt in a Day		Quilt in a Day
4 PM	Finding Your Roots Hidden in the Genes	Good Karma Hospital Season 1, Episode 6	Finding Your Roots In the Blood	Good Karma Hospital Season 2, Episode 1	Finding Your Roots Far from Home
4:30					
5 PM	Horizons	Compass Points	Horizons	Compass Points	Horizons
5:30	Live from the LBJ Library	Daily Blend with AC	Live from the LBJ Library	Daily Blend with AC	Live from the LBJ Library
6 PM	Lawrence Welk Show America at Play	My King Charles	Lawrence Welk Show Caribbean Cruise	Keeping Up Appearances	Lawrence Welk Show Tribute to Irving Berlin
6:30				Keeping Up Appearances	

	17 Sunday	23 Saturday	24 Sunday	30 Saturday	31 Sunday
5 AM	Mister Rogers' Neighborhood				
5:30	Arthur				
6 AM	Wild Kratts				
6:30	Weather Hunters				
7 AM	Lyla in the Loop	Wowsabout	Lyla in the Loop		
7:30	Carl the Collector				
8 AM	Market to Market	Daniel Tiger	Market to Market	Daniel Tiger	Market to Market
8:30	Weathtrack	Curious Crew	Weathtrack	Curious Crew	Weathtrack
9 AM	Firing Line	DIY Science Time	Firing Line	DIY Science Time	Firing Line
9:30	To The Contrary	Homemade Live!	To The Contrary	Change Your Brain, Change Your Pain with Daniel Amen, MD	To The Contrary
10 AM	Washington Week	Lidia's Kitchen	Washington Week		Washington Week
10:30	Missouri Politics	Milk Street	Missouri Politics		Missouri Politics
11 AM	Live from the LBJ Library	Cook's Country	Live from the LBJ Library	America's Home Cooking: Flavors of the Fourth	Making of the American Revolution
11:30	Balancing Act	America's Test Kitchen	Balancing Act		
12 PM	Lawrence Welk Show Tribute to Irving Berlin	This Old House	Lawrence Welk Show Grammy Award Songs		
12:30		This Old House			
1 PM	Secrets of the Dead The Civil War's Lost Massacre	Ask This Old House	Secrets of the Dead The Woman in the Iron Coffin	Great Scenic Railway Journeys 30th Anniversary Special	50 Years with Peter, Paul, and Mary
1:30		Market to Market			
2 PM	Puzzle Lady Episode: 2	Motorweek	Puzzle Lady Episode: 3		
2:30		Woodsmith Shop			
3 PM	RFDs: Royal Flying Doctor Service	Love of Quilting	RFDs: Royal Flying Doctor Service	Celebrating America 250: Made With Love	Woody Guthrie at 100! Live at the Kennedy Center
3:30		Quilt in a Day			
4 PM	Good Karma Hospital Season 2, Episode 2	Finding Your Roots Stranger Than Fiction	Good Karma Hospital Season 2, Episode 3	Andre Rieu: The Power of Love	Women of World War II: The Untold Stories
4:30					
5 PM	Compass Points	Horizons	Compass Points		
5:30	Daily Blend with AC	Live from the LBJ Library	Daily Blend with AC	Barry Manilow: Live By Request	
6 PM	Keeping Up Appearances	Lawrence Welk Show Grammy Award Songs	Keeping Up Appearances		
6:30	Keeping Up Appearances		Keeping Up Appearances		

6.2 CREATE

DAYTIME

	Sunday	Monday	Tuesday	Wednesday
5AM	Classical Stretch	Craft in America	Garden Home	Make Your Mark
5:30	Happy Yoga		Life in Bloom	Healing Yoga
6AM	Dive in Tokyo	Afro-Latino Travel	Dream of Europe	Bare Feet
6:30	Pocket Sketching	Love of Quilting	Fit 2 Stitch	Joy of Painting
7AM	Classical Stretch	This Old House	Garage	Woodworker
7:30	Classical Stretch	Ask This Old House	Life in Bloom	Healing Yoga
8AM	The Jazzy Vegetarian	Dining with the Chef	Pati's Mexican Table	Cook's Country
8:30	Christina Cooks	Homemade Live!	Plates and Places	America's Test Kitchen
9AM	Trails to Oishii Tokyo	Curious Traveller	Travels with Darley	Passion Italy
9:30	Journeys In Japan	Ireland with Michael	Travelscope	Places to Love
10AM	Life In Bloom	Rick Steves' Europe		
10:30	Family Plot	Best of the Joy of Painting		
11AM	Create Showcase May 1 - 3 Fiesta with Pati May 8 - 10 Happy Travels, Rick! May 15 - 17 Creating in Community: Asian Pacific American Culture May 22 - 24 National Barbeque Month (Viewer's Choice) May 29 - 31 Weekend Projects	French Chef Classics	Pati's Mexican Table	Cook's Country
11:30		People of the North	Plates and Places	America's Test Kitchen
12PM		Afro - Latino Travels	Dream of Europe	Bare Feet
12:30		Love of Quilting	Fit 2 Stitch	Joy of Painting
1PM		This Old House	Garage	Woodworker
1:30		Ask This Old House	Life in Bloom	Healing Yoga
2PM		Afro - Latino Travels	Dream of Europe	Bare Feet
2:30		America's Test Kitchen	Cook's Country	America's Test Kitchen
3PM		French Chef Classics	Pati's Mexican Table	Cook's Country
3:30		Homemade Live!	Plates and Places	America's Test Kitchen
4PM	Kitchen Queens	Curious Traveller	Travels with Darley	Passion Italy
4:30	My Greek Table	Ireland with Michael	Travelscope	Places to Love
5PM	How She rolls	Rick Steves' Europe		
5:30	Life of Loi	Table for All		
6PM	To Dine For	My Greek Table	Kitchen Curious	Lidia's Kitchen
6:30	Cook's Country		Wild Harvest	Cook's Country

Thursday	Friday	Saturday
Start Up	Urban Conversion	Classical Stretch
Yoga In Practice	Family Plot	Healing Yoga
Have Guitar . . . World	Daytripper	Taste of History
Quilting Arts	Sewing with Nancy	Paint This With Jerry
American Woodshop	This Old House	Ask This Old House
Yoga in Practice	Ask This Old House	This Old House
Farmer & the Foodie	Healthful Indian Flavors	Garden Smart
Milk Street	America's Test Kitchen	Garden Smart
Wild Rivers	Cycle Around Japan	Create Showcase May 1 - 3 Fiesta with Pati May 8 - 10 Happy Travels, Rick! May 15 - 17 Creating in Community: Asian Pacific American Culture May 22 - 24 National Barbeque Month (Viewer's Choice) May 29 - 31 Weekend Projects
Travelscope	Places to Love	
Rick Steves' Europe		
Best of the Joy of Painting		
Farmer & the Foodie	Healthful Indian Flavors	
Milk Street	America's Test Kitchen	
Have Guitar . . . World	Daytripper	
Quilting Arts	Sewing with Nancy	
American Woodshop	This Old House	
Yoga in Practice	Ask This Old House	
Have Guitar . . . World	Daytripper	This Old House
Cook's Country	America's Test Kitchen	Ask This Old House
Farmer & the Foodie	Healthful Indian Flavors	America's Test Kitchen
Milk Street	America's Test Kitchen	Cook's Country
Wild Rivers	Cycle Around Japan	Rick Steves Art of Europe
Travelscope	Places To Love	
Rick Steves' Europe		
Table for All		Milk Street
Planet Barbecue	Milk Street	Milk Street
Pati's Mexican Table	Cook's Country	Pati's Mexican Table

Schedule Changes

May 2
4:30 p.m. Painting with Wilson Bickford

May 4
9 a.m. Fly Brother with Ernest White II
4 p.m. Fly Brother with Ernest White II
5:30 p.m. Kitchen Queens

May 5
6 a.m. Dream of Italy
12 p.m. - Dream of Italy
2 p.m. - Dream of Italy

May 11
5:30 p.m. - Kitchen Queens

May 20
9 a.m. Island Without Cars
4 p.m. Island Without Cars

May 21
6 a.m. Family Travel
12 p.m. Family Travel
2 p.m. Family Travel

May 22
5 a.m. My World Too

May 24
4 p.m. Table For All

May 25
9:30 p.m. Weekends with Yankee
4:30 p.m. Weekends with Yankee

May 27
9 a.m. Island Without Cars
4 p.m. Island Without Cars

May 28
6 a.m. Family Travel
9 a.m. Crossing South
2 p.m. Family Travel
12 p.m. Family Travel
4 p.m. Crossing South
6 p.m. Planet Smoke

May 29
5 a.m. My World Too
8 a.m. Lucky Chow
11 a.m. Lucky Chow

May 31
4 p.m. Table For All

	Mondays	Tuesdays	Wednesdays	Thursdays	Fridays
5 AM	Yoga in Practice - Build increased awareness, strength, and flexibility while reducing stress				
5:30	Sit and Be Fit - Therapeutic exercise to make everyday activities easier				
6 AM	Live from Paris - News from France 24				
7 AM	Democracy Now! - An award-winning, independent, noncommercial newscast				
8 AM	BBC News- A detailed look into news stories from around the world				
8:30	Gzero World with Ian Bremmer	Laura Flanders	This American Land	Tell Me More	Story in the Public Square
9 AM	Cycle Around Japan Highlights	Medical Frontiers	Dive In Tokyo	Journeys in Japan	Asia Insight
9:30	Yoga in Practice - Build increased awareness, strength, and flexibility while reducing stress				
10 AM	Craft in America - Visit America's premier craft artists in their studios				
11 AM	Ask This Old House - Helping homeowners tackle everyday home improvement projects				
11:30	Sit and Be Fit - Therapeutic exercises designed to make everyday activities easier				
12 PM	See Next Page				
1 PM					
2 PM	Legacy List with Matt Paxton - Matt Paxton helps homeowners downsize their estates. 5/1, 5/7 and 5/8 The American Revolution, cont'd 5/1 and 5/7 2:30 Trolley Park: Great Lakes				
3 PM	DW News - A daily newscast from the heart of Europe				
3:30	DW Focus on Europe	DW Euromaxx	DW In Good Shape	DW Global Us	Story in the Public Square
4 PM	France 24 Afternoon News - News from France				
6 PM	Antiques Roadshow	Keeping Up Appearances	Antiques Roadshow		

PBS News Hour Now At 10 p.m.

This summer, end your evening watching PBS News Hour at its new time, 10 p.m. Co-anchors Amna Nawaz and Geoff Bennett give an in-depth analysis of current events with a news summary, live studio interviews and discussions of domestic and international issues.






Keeping Up Appearances

Saturdays at 5 p.m. | Tuesdays at 6 p.m.

This British classic sitcom is a masterclass in character comedy. Get to know the snobbish housewife Hyacinth Bucket ("It's pronounced Bouquet!") who is determined to climb the social ladder, in spite of her family's working class connections and the constant chagrin of her long suffering husband.

	Mondays	Tuesdays	Wednesdays	Thursdays	Fridays
12 PM	Nature 5/4 <i>Woodpeckers: The Hole Story</i> 5/18 <i>Attenborough and the Sea Dragon</i> 5/25 <i>Attenborough's Wonder of Song</i> ----- 5/11 <i>Life on Earth: Attenborough's Greatest Adventure</i>	Shared Planet 5/5 <i>Cities</i> 5/12 <i>Open Spaces</i> 5/19 <i>Forests</i> 5/26 <i>Waters</i>	Story of China with Michael Wood 5/6 <i>Ancestors / Silk Roads and China Ships</i> ----- 5/13 <i>Golden Age / The Ming</i> 5/20 <i>The Last Empire / The Age of Revolution</i> -----	5/7 <i>The American Revolution The Soul of All America</i> ----- American Buffalo 5/14 <i>Blood Memory</i> 5/21 <i>Into the Storm</i> -----	5/1 <i>The American Revolution Conquer By A Drawn Game</i> 5/8 <i>The American Revolution The Most Sacred Thing</i> ----- American Buffalo 5/15 <i>Into the Storm</i> -----
	5/4 <i>Piping Plovers of Moonlight Bay</i> 5/11 <i>Ocean to Idaho / Sage Wisdom West (1:30 start)</i> 5/18 <i>Lost Salmon</i> 5/25 <i>Arkansas Wild: The Story of Trout Tourism on the Little Red River</i>	5/5 <i>Return of the Trumpeters</i> 5/12 <i>Rising Wings</i> 5/19 <i>Guardians of Yellowstone: The Yellowstone Cougar Project</i> 5/26 <i>Stars At Night</i>	5/27 <i>Life Reimagined: The George Masa Story / Unforgettable August Post (1:30 start)</i>	5/28 <i>Seabiscuit: American Experience / Bring Them Home (1:00 start)</i>	5/22 <i>American Masters W.E.B. Du Bois: Rebel With A Cause</i> 5/29 <i>Living Dream: 100 Rocky Mountain National Park / Vanishing Voices: Saving Our Hawaiian Forest Birds (1:30 start)</i>

6.3 EMERGE

WEEKEND

	2 Saturday	3 Sunday	9 Saturday	10 Sunday	16 Saturday
5 AM	Market to Market	Classic Gospel <i>Ernie Haase & Signature Sound</i>	Market to Market	Classic Gospel <i>Wilson Fairchild: Statler Made</i>	Market to Market
5:30	ICT Newscast		ICT Newscast		ICT Newscast
6 AM	Live From Paris France 24 News				
6:30					
7 AM					
7:30					
8 AM	To The Contrary	Motorweek	To The Contrary	Motorweek	To The Contrary
8:30	Wider World	Behind the Wings	Wider World	Behind the Wings	Wider World
9 AM	Open Mind	America's Heartland	Open Mind	America's Heartland	Open Mind
9:30	Happy Yoga	ICT Newscast	Happy Yoga	ICT Newscast	Happy Yoga
10 AM	DW In Good Shape	Daily Blend with AC	DW In Good Shape	Daily Blend with AC	DW In Good Shape
10:30	DW Focus on Europe	Chavis Chronicles	DW Focus on Europe	Chavis Chronicles	DW Focus on Europe
11 AM	DW Global Us	Great Performances <i>Now Hear This The Iceland Sound</i>	DW Global Us	Great Performances <i>Suffs</i>	DW Global Us
11:30	DW Euromaxx		DW Euromaxx		DW Euromaxx
12 PM	Dining With the Chef	Great Performances at the Met <i>Il Barbiere Di Siviglia</i>	Dining With the Chef	Great Performances at the Met <i>Il Barbiere Di Siviglia</i>	Dining With the Chef
12:30	Trails to Oishii Tokyo		Trails to Oishii Tokyo		Trails to Oishii Tokyo
1 PM	Asia Insight		Asia Insight		Asia Insight
1:30	Daily Blend with AC		Daily Blend with AC		Orchard House
2 PM	NOVA <i>Return to the Moon</i>	Gordon Getty: There Will Be Music	NOVA <i>Decoding The Universe: Cosmos</i>	Roadtrip Nation: A Single Mom's Story	NOVA <i>Decoding The Universe: Quantum</i>
2:30					
3 PM	Nature <i>Woodpeckers: The Hole Story</i>	Gordon Getty: There Will Be Music	Life On Earth: Attenborough's Greatest Adventure	Grandma Stand	Nature <i>Attenborough and the Sea Dragon</i>
3:30					
4 PM	The Piping Plovers of Moonlight Bay	Healthy Minds	To the Ends of the Earth <i>The Natural World - Oceans</i>	Healthy Minds	To the Ends of the Earth: <i>The Natural World: Pushing Boundaries</i>
4:30		Market to Market		Market to Market	
5 PM	Keeping Up Appearances	Washington Week	Keeping Up Appearances	Washington Week	Keeping Up Appearances
5:30	Keeping Up Appearances	Missouri Politics	Keeping Up Appearances	Missouri Politics	Keeping Up Appearances
6 PM	Cleaner	Stand Together As One	Cleaner	Unveiled: Daisy Bates and Johnny Cash	Cleaner
6:30	Cleaner		Cleaner	Cleaner	

	17 Sunday	23 Saturday	24 Sunday	30 Saturday	31 Sunday	
5 AM	Classic Gospel <i>Gaither Vocal Band</i>	Market to Market	Classic Gospel <i>Whitney Houston</i>	Market to Market	Classic Gospel <i>Power in the Blood</i>	
5:30		ICT Newscast		ICT Newscast		
6 AM	Live From Paris France 24 News					
6:30						
7 AM						
7:30						
8 AM	Motorweek	To The Contrary	Motorweek	To The Contrary	Motorweek	
8:30	Behind the Wings	Wider World	Behind the Wings	Wider World	Behind the Wings	
9 AM	America's Heartland	Open Mind	America's Heartland	America's Home Cooking: Stuffed	America's Heartland	
9:30	ICT Newscast	Happy Yoga	ICT Newscast		ICT Newscast	
10 AM	Daily Blend with AC	DW In Good Shape	Daily Blend with AC		Daily Blend with AC	
10:30	Chavis Chronicles	DW Focus on Europe	Chavis Chronicles	Chavis Chronicles	Chavis Chronicles	
11 AM	Grandma Stand	DW Global Us	Great Performances An Evening With Nicole Scherzinger	Rick Steves Experiencing Europe	Celebrating America 250: Made With Love	
11:30		DW Euromaxx				
12 PM	Composer: Amy Beach	Dining With the Chef	American Masters W.E.B. Dubois: Rebel with a Cause	Life on Earth: Attenborough's Greatest Adventure	Driving While Black: Race, Space, and Mobility in America	
12:30	Trails to Oishii Tokyo					
1 PM	Great Performances at the Met: <i>Arabella</i>	Asia Insight		NOVA <i>When Whales Could Walk</i>		NOVA <i>The Planets: Saturn</i>
1:30		Daily Blend with AC				
2 PM		NOVA <i>When Whales Could Walk</i>	Post Atlantic:	No Place To Grow Old	Rick Steves Art . .	
2:30						
3 PM	Nature <i>Attenborough's Wonder of Song</i>	No Place To Grow Old	No Place To Grow Old	Rick Steves Art . .	Life on Earth: Attenborough's Greatest Adventure	
3:30						
4 PM	Healthy Minds	To the Ends of The Earth <i>Avian Chronicles</i>	Healthy Minds	Making of the American Revolution	Great Performances <i>Andrea Bocelli 30th - The Celebration</i>	
4:30	Market to Market		Market to Market			
5 PM	Washington Week	Keeping Up Appearances	Washington Week			
5:30	Missouri Politics	Keeping Up Appearances	Missouri Politics			
6 PM	Rhona Classified	Downton Abbey Season 1 on Masterpiece	Eyes of The World: From D-Day to Ve Day	Downton Abbey Season 1 on Masterpiece	Great Performances <i>Andrea Bocelli 30th - The Celebration</i>	
6:30						

	7 PM	7:30 PM	8 PM	8:30 PM
1 Friday	6.1	Washington Week with the Atlantic	Daily Blend with AC	Great Performances <i>Now Hear This Iceland Sound</i> Journey across Iceland to uncover why this small nation produces extraordinary music.
	6.2	America's Test Kitchen	Kitchen Queens: New Orleans	La Frontera with Pati Jinich
	6.3	Agatha and the Midnight Murders		Agatha and the Truth of Murder
2 Saturday	6.1	Puzzle Lady Episode: 1 Bakerbury police call on the "Puzzle Lady" to help solve the murder of a young girl.	Secrets of the Dead <i>Ben Franklin's Bones</i> Bones found in Benjamin Franklin's British residence were used in an illegal anatomy school.	
	6.2	Great American Recipe	Best of the Joy of Painting	Best of the Joy of Painting
	6.3	Lucy Worsley's Holmes Vs. Doyle		Turn: Washington's Spies
3 Sunday	6.1	Call the Midwife Season 15, Episode 7 Despite the impending closure notice, a new cohort of junior doctors joins the midwives.	Maryland on Masterpiece <i>Episode 1</i> Sisters Becca and Rosaline receive unimaginable news about their mother.	
	6.2	Great American Recipe	La Frontera with Pati Jinich	
	6.3	Clive Davis: The Soundtrack of our Lives		
4 Monday	6.1	Antiques Roadshow <i>Grants Farm, Hour 2</i> Harvest hidden treasures at historic Grant's Farm in St. Louis, Missouri.	The American Revolution <i>The Soul of All America</i> The war drags on and moves to new theaters: at sea, in Indian Country, and in the South.	
	6.2	America's Test Kitchen	Kitchen Queens: New Orleans	La Frontera with Pati Jinich
	6.3	Call The Midwife		Miss Scarlet and the Duke on Masterpiece
5 Tuesday	6.1	Finding Your Roots <i>In The Blood</i> Henry Louis Gates, Jr. uncovers the roots of Michael Douglas and Lena Dunham.		The American Revolution <i>The Most Sacred Thing</i> Victory at Yorktown secures independence. Americans aspire for a more perfect union.
	6.2	Milk Street	Kitchen Queens: New Orleans	La Frontera with Pati Jinich
	6.3	Marlow Murder Club on Masterpiece		The Count of Monte Cristo on Masterpiece

9 PM	9:30 PM	10:00 PM	10:30 PM	11 PM	11:30 PM
Great Performances <i>Now Hear This The Composer is Yoo</i> Follow host Scott Yoo's journey to compose a piece of music for the first time.		Amanpour and Company		Democracy Now!	
La Frontera with Pati Jinich		La Frontera with Pati Jinich		Pati's Mexican Table	Pati's Mexican Table
cont'd		PBS News Hour		BBC News	NHK Newsline
Express Way with Dule Hill <i>California</i> In California, Dule Hill connects with artists using their craft to rewrite their narrative.		Austin City Limits <i>Pat Benatar & Neil Giraldo</i>		Recorded Live at Analog <i>Deborah Silver</i>	
Rick Steves Art of Europe		French Chef Classics	Pati's Mexican Table	The Farmer and the Foodie	Cook's Country
Grace Kelly: The Missing Millions		Nightmare Theatre <i>Encounter with the Unknown</i>			
The Count of Monte Cristo on Masterpiece <i>The Duel</i> As Edmond's revenge unfolds, Albert challenges him to a duel amid high stakes.		Dalgliesh on Masterpiece		Murder in the Mountains	
Confucius Was A Foodie		People of the North	Plates and Places	Milk Street	America's Test Kitchen
Stand Together as One		Clive Davis: The Soundtrack of Our Lives			
cont'			Live from the LBJ Library with Mark Updegrave <i>Bill McRaven</i>	Democracy Now!	
Rick Steves' Europe	Ireland with Michael	Seeing Canada	Best of the Joy of Painting	Kitchen Queens	America's Test Kitchen
Miss Scarlet and the Duke on Masterpiece		PBS News Hour		Shared Planet	
cont'd				Democracy Now!	
Rick Steves' Europe	Travelscope	Travels with Darley	Best of the Joy of Painting	Kitchen Queens	Milk Street
My Life is Murder		PBS News Hour		Colombia - WIld and Free	

	7 PM	7:30 PM	8 PM	8:30 PM
6 Wednesday	6.1	Life on Earth: Attenborough's Greatest Adventure Sir David Attenborough tells the story of the wildlife blockbuster that changed his life forever.		NOVA <i>Decoding the Universe: Cosmos</i> See how discoveries over the past 50 years have revolutionized our understanding of the universe.
	6.2	Life of Loi	Kitchen Queens: New Orleans	Pati's Mexican Table
	6.3	Professor T (UK)		RFDS: Royals Flying Doctor Service
7 Thursday	6.1	Keeping Up Appearances	Keeping Up Appearances	Call The Midwife <i>Season 15, Episode 7</i> Despite the impending closure notice, a new cohort of junior doctors join the midwives.
	6.2	Milk Street	Kitchen Queens: New Orleans	Pati's Mexican Table
	6.3	Captivated		Vienna Blood
8 Friday	6.1	Washington Week with the Atlantic	Daily Blend with AC	Great Performances <i>Suffs</i> Witness the American women's suffrage movement in this Tony-winning Broadway musical.
	6.2	America's Test Kitchen	Kitchen Queens: New Orleans	Rick Steves' Europe
	6.3	Agatha And The Curse Of Ishtar		Sherlock, Season 1: A Study in Pink
9 Saturday	6.1	Puzzle Lady <i>Episode: 2</i> The Puzzle Lady closes in on Bakerbury's Graveyard killer.	Secrets of the Dead <i>Jamestown's Dark Winter</i> Forensic anthropologists excavate the early American colony and uncover dark secrets.	
	6.2	Great American Recipe	Best of the Joy of Painting	Best of the Joy of Painting
	6.3	Lucy Worsley's Holmes Vs. Doyle		Turn: Washington Spies
10 Sunday	6.1	Call the Midwife <i>Season 15, Episode 8</i> Sister Veronica must decide her future before the maternity home prepares to close its doors.		Maryland on Masterpiece <i>Episode 2</i> As new revelations emerge, the sisters deal with the fallout from their mother's death.
	6.2	Great American Recipe	Rick Steves' Europe	Rick Steves' Europe
	6.3	Mel Brooks: The Genius Entertainer		Great Performances <i>Suffs</i>

9 PM	9:30 PM	10:00 PM	10:30 PM	11 PM	11:30 PM
Shared Planet <i>Open Spaces</i> Witness how people and wildlife are finding a balance in Earth's most vulnerable landscapes.		Amanpour and Company		Democracy Now!	
Rick Steves' Europe	Places to Love	Passion Italy	Best of the Joy of Painting	Kitchen Queens	Life of Loi
Ridley		PBS News Hour		Expedition with Steve Backshall	
Good Karma Hospital <i>Season 2, Episode 1</i> Ruby faces new challenges as a blistering heat wave hits Kerala.		Amanpour and Company		Democracy Now!	
Rick Steves' Europe	Travelscope	Wild Rivers	Best of the Joy of Painting	Kitchen Queens	Milk Street
Murder In The Mountains		PBS News Hour		Life On Earth: Attenborough's Greatest Adventure	
cont'd			Amanpour and Company		Concerto for Slack Key Guitar and Orchestra: Malama 'Aina
Rick Steves' Europe	Rick Steves' Europe	Rick Steves' Europe	Rick Steves' Europe	Rick Steves' Europe	Rick Steves' Europe
cont'd		PBS News Hour		NOVA <i>Decoding the Universe: Cosmos</i>	
Express Way with Dule Hill <i>Appalachia</i> Dule Hill explores how music can provide solace and healing in Appalachia.		Austin City Limits <i>Gary Clark Jr. / Black Pumas</i>		Recorded Live at Analog <i>The Black Crowes</i>	
Rick Steves Art of Europe		French Chef Classics	Pati's Mexican Table	The Farmer and the Foodie	Cook's Country
Edward & Wallis: The Bahamas Scandals		Nightmare Theatre <i>Manos: The Hands of Fate</i>			
The Count of Monte Cristo on Masterpiece <i>The Last Two</i> Follow the lives of the noble Crawley family and their staff, set in 1912.		Dalgliesh on Masterpiece <i>A Taste for Death, Part 2</i> Dalgliesh is forced to draw on his own personal tragedies to disarm the killer.		Murder in the Mountains <i>Rubbish Driver</i>	
Confucius Was A Foodie		People of the North	Plates and Places	Milk Street	America's Test Kitchen
cont'd			Perfect 36	Mel Brooks: The Genius Entertainer	

	7 PM	7:30 PM	8 PM	8:30 PM
11 Monday	6.1	Antiques Roadshow <i>Grants Farm, Hour 3</i> Catch a crop of discoveries at scenic Grant's Farm in St. Louis, Missouri.		Antiques Roadshow <i>Santa Fe's Museum Hill, Hour 3</i> It's antique treasures galore at Santa Fe's Museum Hill with a \$100,000 to \$200,000 find!
	6.2	America's Test Kitchen	Kitchen Queens: New Orleans	Rick Steves' Europe Rick Steves' Europe
	6.3	Call The Midwife		Miss Scarlet and The Duke On Masterpiece
12 Tuesday	6.1	Finding Your Roots <i>Far From Home Cyndi Lauper, Jamie Chung, and Danny Trejo discover their family tree with Henry Louis Gates.</i>		Finding Your Roots <i>Larger Than Life</i> Henry Louis Gates, Jr. connects Lea Salonga & Amanda Seyfried to their dramatic ancestors.
	6.2	Milk Street	Kitchen Queens: New Orleans	Rick Steves' Europe Rick Steves' Europe
	6.3	Marlow Murder Club On Masterpiece		The Count Of Monte Cristo On Masterpiece
13 Wednesday	6.1	Nature <i>Attenborough and the Sea Dragon</i> The discovery of the Ichthyosaur, a fish lizard that lived during the age of dinosaurs, is explored.		NOVA <i>Decoding the Universe: Quantum</i> Discover the world of the subatomic realm in the quantum universe.
	6.2	Life of Loi	Kitchen Queens: New Orleans	Table for All Rick Steves' Europe
	6.3	Professor T (UK)		RFDS: Royal Flying Doctor Service
14 Thursday	6.1	Keeping Up Appearances	Keeping Up Appearances	Call The Midwife <i>Season 15, Episode 8</i> Sister Veronica must decide her future before the maternity home prepares to close its doors.
	6.2	Milk Street	Kitchen Queens: New Orleans	Table for All Rick Steves' Europe
	6.3	Captivated		Vienna Blood
15 Friday	6.1	Washington Week with the Atlantic	Daily Blend with AC	Great Performances <i>Top Hat</i> Enjoy this musical inspired by the 1935 movie musical starring Fred Astaire and Ginger Rogers.
	6.2	America's Test Kitchen	Table for All	Relish Field Trip with Curtis Stone: Hong Kong
	6.3	Masterpiece Mystery! Sherlock, Season 1: The Blind Banker		Sherlock, Season 1: The Great Game

9 PM	9:30 PM	10:00 PM	10:30 PM	11 PM	11:30 PM
Independent Lens <i>Natchez</i> Tourism, memory, and race collide in a Mississippi town built on antebellum nostalgia.			Amanpour and Company		Democracy Now!
Rick Steves' Europe	Ireland with Michael	Seeing Canada	Best of the Joy of Painting	Kitchen Queens	America's Test Kitchen
Miss Scarlet and The Duke On Masterpiece		PBS News Hour		Shared Planet	
Frontline		Amanpour and Company		Democracy Now!	
Rick Steves' Europe	Travelscope	Travels with Darley	Best of the Joy of Painting	Kitchen Queens	Milk Street
My Life Is Murder		PBS News Hour		Colombia - Wild And Free	
Shared Planet <i>Forests</i> Journey from Guatemala to Japan to meet the pioneers restoring the way we coexist.			Amanpour and Company		Democracy Now!
Rick Steves' Europe	Places to Love	Passion Italy	Best of the Joy of Painting	Table for All	Life of Loi
Ridley		PBS News Hour		Expedition With Steve Backshall	
Good Karma Hospital <i>Season 2, Episode 2</i> Lydia discovers a former patient is in the care of an herbal doctor.			Amanpour and Company		Democracy Now!
Rick Steves' Europe	Travelscope	Wild Rivers	Best of the Joy of Painting	Table for All	Milk Street
Murder In The Mountains		PBS News Hour		Nature <i>Attenborough and the Sea Dragon</i>	
cont'd			Amanpour and Company		Democracy Now!
cont'd	Confucius Was A Foodie		Lucky Chow	Food Roots	
cont'd		PBS News Hour	NOVA <i>Decoding the Universe: Quantum</i>		

	7 PM	7:30 PM	8 PM	8:30 PM
16 Saturday	6.1	Puzzle Lady <i>Episode: 3</i> Cora's birthday turns deadly when she's hired to investigate an old murder case.		Secrets of the Dead <i>The Civil War's Lost Massacre</i> A search for the remains of Black Union soldiers murdered toward the end of the Civil War.
	6.2	Antiques Roadshow	Best of the Joy of Painting	Best of the Joy of Painting
	6.3	Lucy Worsley's Holmes Vs. Doyle		Turn: Washington's Spies
17 Sunday	6.1	Lucy Worsley's Royal Myths and Secrets <i>Elizabeth 1: The Warrior Queen</i> Explore how Elizabeth I's image as a warrior queen shaped British national identity for centuries.		Maryland on Masterpiece <i>Episode 3</i> Everything comes to a head as Richard and Jim arrive at the Isle of Man.
	6.2	Antiques Roadshow	Relish	Lucky Chow
	6.3	Charley Pride: I'm Just Me		Great Performances <i>Top Hat</i>
18 Monday	6.1	Antiques Roadshow <i>Junk in the Trunk 15</i> Visit all five cities from Season 30 for never-before-seen finds!		Antiques Roadshow <i>Cheekwood Estate & Gardens, Hour 1</i> Watch charming appraisals at Cheekwood Estate & Gardens, like one valued at up to \$80,000!
	6.2	America's Test Kitchen	Table for All	Field Trip with Curtis Stone: Hong Kong
	6.3	Maigret On Masterpiece		Miss Scarlet And The Duke On Masterpiece
19 Tuesday	6.1	Finding Your Roots <i>Stranger Than Fiction</i> Henry Louis Gates, Jr. reveals inspiring ancestors of novelist Amy Tan & poet Rita Dove.		American Masters <i>W.E.B. Du Bois: Rebel With A Cause</i> Explore the life and legacy of the notable Black scholar and civil rights pioneer.
	6.2	Milk Street	Table for All	Confucius Was A Foodie
	6.3	Marlow Murder Club On Masterpiece		Sister Boniface Mysteries
20 Wednesday	6.1	Nature <i>Attenborough's Wonder of Song</i> As humankind gets noisier, the beautiful songs of the humpback whale are being drowned out.		NOVA <i>When Whales Could Walk</i> Giant fossils uncovered in the Sahara Desert reveal new secrets of how whales evolved.
	6.2	Life of Loi	Table for All	Food Roots
	6.3	Professor T (UK)		New Blood

9 PM	9:30 PM	10:00 PM	10:30 PM	11 PM	11:30 PM
Express Way with Dule Hill <i>Texas</i> In Texas, Dule Hill discovers artists fighting for representation of their communities.		Austin City Limits <i>Jelly Roll / The War and Treaty</i>		Papa Ray's Vintage Vinyl Roadshow	Papa Ray's Vintage Vinyl Roadshow
Rick Steves Art of Europe		French Chef Classics	Pati's Mexican Table	The Farmer and the Foodie	Cook's Country
Beyonce & Solange - The Queen of Pop and Her Soul Sister		Nightmare Theatre <i>Night Of The Blood Beast</i>			
Downton Abbey on Masterpiece <i>Downton Abbey, Part 1</i>				Murder in the Mountains <i>Firestarter</i>	
Confucius Was A Foodie		People of the North	Plates and Places	Milk Street	America's Test Kitchen
cont'd			Unforgettable Augustus Post	Charley Pride: I'm Just Me	
Independent Lens <i>Light of the Setting Sun</i> A filmmaker confronts her Chinese family's trauma and questions whether the cycle can end.			Amanpour and Company		Democracy Now!
Rick Steves' Europe	Ireland with Michael	Seeing Canada	Best of the Joy of Painting	Table for All	America's Test Kitchen
Miss Scarlet And The Duke On Masterpiece		PBS News Hour		Shared Planet	
cont'd			Amanpour and Company		Democracy Now!
Rick Steves' Europe	Travelscope	Travels with Darley	Best of the Joy of Painting	Table for All	Milk Street
My Life Is Murder		PBS News Hour		Ancient Skies	
Shared Planet <i>Waters</i> Dive into the stories of people setting a new standard for aquatic wildlife protection.			Amanpour and Company		Democracy Now!
Rick Steves' Europe	Places to Love	Islands Without Cars	Best of the Joy of Painting	Table for All	Life of Loi
Ridley		PBS News Hour		Expedition with Steve Backshall	

	7 PM	7:30 PM	8 PM	8:30 PM
21 Thursday	6.1 Keeping Up Appearances	Keeping Up Appearances	Lucy Worsley's Royal Myths and Secrets <i>Elizabeth I: Warrior Queen</i> Explore how Elizabeth I's image as a warrior queen shaped British national identity for centuries.	
	6.2 Milk Street	Table for All	Pacific Heartbeat	
	6.3 Captivated	Vienna Blood		
22 Friday	6.1 Washington Week with the Atlantic	Daily Blend with AC	Great Performances <i>An Evening with Nicole Scherzinger</i> Nicole Scherzinger returns to London for a solo concert at Royal Albert Hall.	
	6.2 America's Test Kitchen	Table for All	America the Bountiful	Ellie's Real Good Food
	6.3 Masterpiece Mystery! Sherlock, Season 2: A Scandal in Belgravia	Sherlock, Season 2		
23 Saturday	6.1 Puzzle Lady <i>Episode: 4</i> The Puzzle Lady discovers a dark conspiracy at the heart of Bakerbury.	Secrets of the Dead <i>The Woman in the Iron Coffin</i> Forensic experts examine the remains of a young African American woman from 19th century New York.		
	6.2 Antiques Roadshow	Best of the Joy of Painting	Best of the Joy of Painting	
	6.3 Downton Abbey Season 1 on Masterpiece (6:00 start)	Turn: Washington's Spies		
24 Sunday	6.1 National Memorial Day Concert Joe Mantegna and Gary Sinise once again host the National Memorial Day Concert.	National Memorial Day Concert		
	6.2 Antiques Roadshow	America The Bountiful	Ellie's Real Good Food	
	6.3 Eyes of the World: From D-Day to VE-Day (6:00 start)	D-Day at Pointe-Du-Hoc		
25 Monday	6.1 Antiques Roadshow <i>Celebrating Asian-Pacific Heritage</i> Travel to watch incredible items with Asian and Pacific Islands origins!	Antiques Roadshow <i>Cheekwood Estate & Gardens, Hour 2</i> Visit Music City for an astonishing \$75,000 to \$85,000 find!		
	6.2 America's Test Kitchen	Table for All	Sara's Weeknight Meals	Lucky Chow
	6.3 Maigret on Masterpiece	Miss Scarlet and the Duke on Masterpiece		

9 PM	9:30 PM	10:00 PM	10:30 PM	11 PM	11:30 PM
Good Karma Hospital <i>Season 2, Episode 3</i> Gabriel joins Ruby on an outreach program to a tea plantation.		Amanpour and Company		Democracy Now!	
Rick Steves' Europe	Travelscope	Wild Rivers	Best of the Joy of Painting	Table for All	Milk Street
Murder in the Mountains		PBS News Hour		Nature <i>Attenborough's Wonder of Song</i>	
cont'd	The Show Must Go On!	Amanpour and Company		Democracy Now!	
Sara's Weeknight Meals	Lucky Chow	The Jazzy Vegetarian	New Orleans Celebrations	Project Smoke	Cook's Country
The Hounds of Baskerville (cont'd)		PBS News Hour		NOVA <i>When Whales Could Walk</i>	
Express Way with Dule Hill <i>Chicago</i> In Chicago, Dule Hill explores why art and activism are synonymous.		Austin City Limits <i>Chris Stapleton</i>		Papa Ray's Vintage Vinyl Roadshow	Papa Ray's Vintage Vinyl Roadshow
Rick Steves Art of Europe		French Chef Classics	Pati's Mexican Table	The Farmer and the Foodie	Cook's Country
Lucy Worsley's Royal Myths		Nightmare Theatre <i>Warriors of the Wasteland</i>			
cont'd		Downton Abbey Season 1 on Masterpiece <i>Downton Abbey - Part 2</i>			
Confucius Was A Foodie		People of the North	Plates and Places	Milk Street	America's Test Kitchen
Waal River Crossing: 1944		1st to Fight: Pacific War Marines		Rohna Classified	
Independent Lens <i>Third Act</i> Father and son filmmakers use their shared medium to explore art, trauma, and legacy.			Amanpour and Company		Democracy Now!
Rick Steves' Europe	Weekends With Yankee	Seeing Canada	Best of the Joy of Painting	Table for All	America's Test Kitchen
Miss Scarlet and the Duke on Masterpiece		PBS News Hour		Shared Planet	

	7 PM	7:30 PM	8 PM	8:30 PM
26 Tuesday	6.1	Finding Your Roots <i>Dreamers One and All</i> Henry Louis Gates, Jr. traces the ancestry of actor Sharon Stone & model Chrissy Teigen.		Seabiscuit: American Experience
	6.2	Milk Street	Table for All	The Jazzy Vegetarian New Orleans Celebrations
	6.3	Marlow Murder Club on Masterpiece		Sister Boniface Mysteries
27 Wednesday	6.1	Nature <i>Attenborough and the Jurassic Sea Monster</i> Sir David Attenborough and experts unearth the fossil of the largest Jurassic predator ever known.		NOVA Great Mammoth Mystery An excavation of a site in southwest England reveals traces of ancient mammoths and Neanderthals.
	6.2	Life of Loi	Table for All	Project Smoke Cook's Country
	6.3	Professor T (UK)		New Blood
28 Thursday	6.1	Keeping Up Appearances	Keeping Up Appearances	Lucy Worsley's Royal Myths and Secrets <i>Queen Anne: The Mother of Great Britain</i> Examine why Queen Anne's powerful role in the forging of Great Britain has often been forgotten.
	6.2	Milk Street	Table for All	My Greek Table Pati's Mexican Table
	6.3	Captivated		Vienna Blood
29 Friday	6.1	Washington Week with the Atlantic	Daily Blend with AC	Great Performances
	6.2	America's Test Kitchen	Table for All	American Woodshop American Woodshop
	6.3	Masterpiece Mystery! Sherlock, Season 2: The Reichenbach Fall		Sherlock, Season 1: The Blind Banker
30 Saturday	6.1	60s Pop, Rock, & Soul (My Music Presents) Join an all-star concert reuniting legendary singers and groups performing the greatest hits of the 1960s. Among the iconic artists are Davy Jones of the Monkees, Paul Revere & the Raiders, Jefferson Starship, The Miracles, Gary Lewish & The Playboys, and more.		
	6.2	Antiques Roadshow	Best of the Joy of Painting	Best of the Joy of Painting
	6.3	Downton Abbey Season 1 on Masterpiece (6:00 start)		Kris Kristofferson: The Life and Songs

9 PM	9:30 PM	10:00 PM	10:30 PM	11 PM	11:30 PM
Frontline		Amanpour and Company		Democracy Now!	
Rick Steves' Europe	Travelscope	Travels with Darley	Best of the Joy of Painting	Table for All	Milk Street
My Life is Murder		PBS News Hour		Ancient Skies	
Secrets of the Dead <i>China's Bronze Kingdom</i> Explore China's bronze kingdom in the mountains of Sichuan.		Amanpour and Company		Democracy Now!	
Rick Steves' Europe	Places to Love	Islands Without Cars	Best of the Joy of Painting	Table for All	Life of Loi
Ridley		PBS News Hour		Expedition with Steve Backshall	
Good Karma Hospital <i>Season 2, Episode 4</i> Ruby must decide if she can forgive past mistakes.		Amanpour and Company		Democracy Now!	
Rick Steves' Europe	Travelscope	Crossing South	Best of the Joy of Painting	Table for All	Milk Street
Murder in the Mountains		PBS News Hour		Nature Attenborough and the Jurassic Sea Monster	
Great Performances		Amanpour and Company		Democracy Now!	
Ask This Old House	Ask This Old House	Volunteer Woodworker	Volunteer Woodworker	Woodsmith Shop	Woodsmith Shop
cont'd		PBS News Hour		NOVA Great Mammoth Mystery	
Billy Joel: The 100th Live at Madison Square Garden Celebrate Billy Joel's 100th consecutive residency performance at Madison Square Garden.				Supertramp - Live in Paris Relive the memories of Super Tramp's concert special at the Pavillon de Paris in 1979.	
Rick Steves Art of Europe		French Chef Classics	Pati's Mexican Table	Farmer and the Foodie	Cook's Country
cont'd	Rick Steves Art of Europe: Michelangelo to Monet				Change Your Brain ...

	7 PM	7:30 PM	8 PM	8:30 PM	
31 Sunday	6.1	Barry Manilow: Live by Request (6:00 start)	All Creatures Great and Small: Seasons of the Dales Revisit the most picturesque scenes from the beloved series in a relaxing trip to the idyllic Yorkshire countryside. Enjoy the enchanting journey through time, seasons, weather and location with the help of the cast, creators and local residents.		
	6.2	Antiques Roadshow	American Woodshop	American Woodshop	
	6.3	Barbra Streisand: Timeless - Live in Concert			



Attenborough All Month

Wednesdays at 7 p.m.

To celebrate Sir David Attenborough's 100th birthday, KMOS 6.1 is presenting Attenborough programs every Wednesday at 7 p.m. On May 13, join as Attenborough pieces together the remarkable discovery of the Ichthyosaur, a fearsome fish lizard that lived during the age of dinosaurs in *NATURE Attenborough and the Sea Dragon*. Then on May 20, *NATURE Attenborough's Wonder of Song* presents seven of the most remarkable animal songs found in nature and explores their significance. Finally on May 27, experts unearth the fossil of the largest Jurassic predator ever known on *NATURE Attenborough and the Jurassic Sea Monster*.

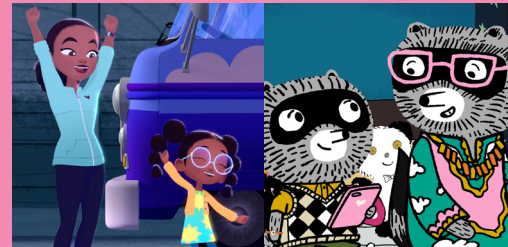
KMOS Membership Update 2026

KMOS is updating its current membership levels from \$5 per month to \$8 per month. This will ensure that KMOS is able to bring you all the member benefits you currently receive including our program guide "Contact" and KMOS Passport, an online library of thousands of hours of PBS programming right at your fingertips. There is nothing you need to do on your part. When your annual membership renews, we will make the change automatically, guaranteeing that your membership continues uninterrupted. If you currently give more than \$8 per month or \$96 per year, you will see no change in your membership level. If you have any questions, please email us at membership@kmos.org or call us at 1-800-753-3436. Thank you for your continued support of KMOS PBS. Your support ensures PBS stays strong in central Missouri. Thank you.

9 PM	9:30 PM	10:00 PM	10:30 PM	11 PM	11:30 PM
Downton Abbey Season 1 on Masterpiece <i>Downton Abbey - Part 3</i>			Tony Bennett: Viva Duets Tony Bennett sings duets with Marc Anthony, Gloria Estefan, Franco De Vita and Vicente Fernandez.		
Confucius Was A Foodie	People of the North	Plates and Places	Milk Street	America's Test Kitchen	
Simon and Garfunkel: The Concert in Central Park			Women of World War II: More Untold Stories		

Celebrate Mother's Day

May 9 and 10 at 6 p.m.



On *Weather Hunters*, learn the colors of the rainbow as Al and the kids orchestrate a rainbow-filled Mother's Day surprise while Dot is away. On *Carl the Collector*, Carl spots a UFO while practicing his theremin performance for his Mama. On *Phoebe & Jay*, the kids discover a box of memories and celebrate their late mother. Finally on *Rosie's Rules*, learn to read a map while Rosie decides where to take Mom for Mother's Day.

Weekday Mornings on 6.1

- 5:00 **Arthur**
- 5:30 **Odd Squad**
- 6:00 **Wild Kratts**
- 6:30 **Weather Hunters**
- 7:00 **Lyla in the Loop**
- 7:30 **Carl the Collector**
- 8:00 **Daniel Tiger**
- 8:30 **Phoebe & Jay**
- 9:00 **Sesame Street**
- 9:30 **Work It Out Wombats!**
- 10:00 **Donkey Hodie**
- 10:30 **Rosie's Rules**
- 11:00 **Elinor Wonders Why**
- 11:30 **Alma's Way**
- 12:00 **Molly of Denali**
- 12:30 **Xavier Riddle**

Saturdays on 6.1

- 5:00 **Mister Rogers'**
 - 5:30 **Arthur**
 - 6:00 **Wild Kratts**
 - 6:30 **Weather Hunters**
 - 7:00 **Lyla in the Loop**
 - 7:30 **Carl the Collector**
 - 8:00 **Daniel Tiger**
 - 8:30 **Curious Crew**
 - 9:00 **DIY Science Time**
- #### Sundays on 6.1
- 5:00 **Mister Rogers'**
 - 5:30 **Arthur**
 - 6:00 **Wild Kratts**
 - 6:30 **Weather Hunters**
 - 7:00 **Lyla in the Loop**
 - 7:30 **Carl the Collector**

KMOS PBS Kids Channel 6.4

Daily / Weekends

- 5:00 **Clifford the Big Red Dog**
- 5:30 **Sesame Street / Dinosaur Train**
- 6:00 **Pinkalicious & Peterrific**
- 6:30 **Curious George / Peg + Cat**
- 7:00 **Sesame Street**
- 7:30 **Phoebe & Jay**
- 8:00 **Work It Out Wombats!**
- 8:30 **Work It Out Wombats!**
- 9:00 **Daniel Tiger's Neighborhood**
- 9:30 **Daniel Tiger's Neighborhood**
- 10:00 **Carl the Collector**
- 10:30 **Carl the Collector / Curious George**
- 11:00 **Donkey Hodie**
- 11:30 **Donkey Hodie / Milo**
- 12:00 **Elinor Wonders Why**
- 12:30 **Rosie's Rules**
- 1:00 **Phoebe & Jay / Super Why!**
- 1:30 **Xavier Riddle**
- 2:00 **Molly of Denali**
- 2:30 **Alma's Way**
- 3:00 **Lyla in the Loop**
- 3:30 **Weather Hunters / Arthur**
- 4:00 **Odd Squad**
- 4:30 **Wild Kratts**
- 5:00 **Wild Kratts**
- 5:30 **Weather Hunters**
- 6:00 **Lyla in the Loop / Family Night**
- 6:30 **Arthur / Family Night**
- 7:00 **Nature Cat / Family Night**
- 7:30 **Hero Elementary / Family Night**
- 8:00 **Cyberchase / Family Night**
- 8:30 **Let's Go Luna! / Ready Jet Go!**

Family Nights 6 - 8 p.m. Sat-Sun

- May 2 - 3 **Wowsabout**
- May 9-10 **Celebrate Mother's Day**
- May 16 - 17 **New Cyberchase and Weather**
- May 23 - 24 **Celebrate AAPI Heritage Month**
- May 30 - 31 **May Flowers**

Non-Profit Organization
U.S. POSTAGE
PAID
Warrensburg, MO
64093
Permit No. 102



KMOS-TV
Warrensburg, MO 64093-5232

ADDRESS SERVICE REQUESTED

WE CAN'T DO IT WITHOUT YOU! BECOME A KMOS MEMBER TODAY

With your gift of \$96.00 or more you will receive 12 issues of our member guide along with streaming access through our video subscription service, KMOS PASSPORT! With your generosity you will not only join the growing KMOS-TV family, but you will also be joining other central Missourians who want to make sure that outstanding, commercial-free programming on public television will continue.

- Please sign me up with my** **MONTHLY** **ONE TIME Gift today!**
 \$96 (\$8 a month) **\$120** (\$10 a month) **\$240** (\$20 a month)
 \$360 (\$30 a month) **\$600.00** (\$50 a month) **\$1,200.00** (\$100 a month)
Other \$_____

Name _____ Phone # _____

Address _____

City _____ State _____ ZIP _____

Email: _____ (*Required for Passport access and/or newsletter.)

My check is enclosed, made payable to KMOS-TV

Please charge my Credit or Debit Card:

Credit Card # _____

Expiration Date ____/____ 3 Digit Security Code _____

Send to: KMOS-TV, University of Central Missouri, Warrensburg, Mo 64093



Scan this QR to
donate online!

Already a member or not interested in becoming a member?
Your donation is still appreciated!